



FACULTY OF LEADERSHIP



NATIONAL CODE: BSB50420

## DIPLOMA OF LEADERSHIP AND MANAGEMENT

Unlock the potential of yourself and others with a Diploma of Leadership & Management. This course will prepare students to apply leadership and management knowledge and skills to working roles.

### CAMPUSES

BRISBANE

EIGHT MILE PLAINS

GOLD COAST

HOBART

SANDY BAY

### OVERVIEW



**INTAKES**  
Flexible



**DURATION**  
52 weeks



**INDUSTRY PLACEMENT**



**INTERNATIONAL STUDENTS**  
No



**CRICOS CODE:**

**16**

**CONTACT HOURS**  
0



Entirely Online (Self-study)

Want to get a start in  
business?  
You need training.

Watch the Video



THIS COURSE ARTICULATES OR PACKAGES WITH THE FOLLOWING UNIVERSITIES:



### NATHANIEL

Graduate Certificate In Leadership Diversity

From our trainer Rudy to the fantastic online resources, super engaging lectures and the outstanding guest speakers – plus the 24/7 student support – there's literally no better place to study. It's incredible.



## DIPLOMA OF LEADERSHIP AND MANAGEMENT

The Diploma of Leadership and Management provides you with an understanding of the skills you need to motivate and inspire others, towards moving into a leadership role within an organisation.

You will undertake units of study covering risk management, financial management, workplace effectiveness, human resources management, and project management. This course will prepare you for management positions in small, medium or large organisations.

### What You'll Learn

- negotiate assignments
- apply codes and standards to professional judgement
- edit texts
- ensure quality control of translations conducted by themselves and others
- translating multimedia materials (Elective units)
- using modern translation technologies (Elective units)
- translating special purpose texts (Elective units)

### Career Outcomes

MANAGER

SUPERVISOR

TEAM LEADER

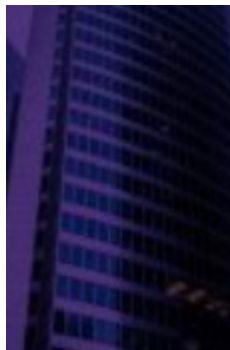
AND EVENT COORDINATOR.

## Rhodes works with industry leaders



## Interested in Studying?

Here's what our students think.



Nathaniel

From our trainer Rudy to the fantastic online resources, super engaging lectures and the outstanding guest speakers – plus the 24/7 student support – there's literally no better place to study. It's incredible.

## INTAKE DATES

## TUITION FEES ()

Course Name	Course Duration		Campus Availability	Intakes
Diploma of Leadership and Management	52 weeks	\$0	BNE EMP EMP HBA SBY	Flexible

## ENTRY REQUIREMENTS

AGE	GRADE	IELTS
<b>None</b>	<b>11</b>	<b>5.0</b>

### ■ AGE

There is no minimum age however, students 18 years of age or turning 18 years old prior to the commencement of the course are desirable, younger student will be acceptable with the permission of the parent or guardian.

### ■ EDUCATION & EXPERIENCE REQUIREMENTS

Year 11 Australian Senior High School Certificate, or equivalent (e.g. completion of Year 12 or High School in the students home country) with full academic results.

### ■ ENGLISH LANGUAGE

Intermediate English (equivalent to 5.0 academic or general IELTS) or Successful completion of Charlton Brown LLN Test

### ■ REQUIRED IDENTIFICATION

Photo ID and evidence of citizenship (international students must provide copy of passport)

### ■ COMPUTER SKILLS & EQUIPMENT

Students on this course require computer access for learning purposes and to complete course assessments. As such, learners must have beginner/intermediate computing skills including use of Microsoft Office programmes, in addition to hardware requirements of a desktop or portable computer with keyboard, pointing device, speaker, web camera and microphone, and a broadband internet connection.

### ■ FURTHER INFORMATION

Students who are unable to meet the academic or English language criteria may in some cases be eligible to undertake our Language, Literacy & Numeracy (LLN) test. Criteria may change at any time without notice. Additional English language requirements may apply to international applicants from non-English speaking backgrounds wishing to articulate on a visa package into a university programme.

## BRISBANE COURSE TRAINERS

## BRISBANE & FACILITIES

### YOUR CAMPUS

## SESSION LOCATIONS

### EIGHT MILE PLAINS COURSE TRAINERS

### EIGHT MILE PLAINS & FACILITIES

### YOUR CAMPUS

### SESSION LOCATIONS

### GOLD COAST COURSE TRAINERS

### GOLD COAST & FACILITIES

### YOUR CAMPUS

### SESSION LOCATIONS

### HOBART COURSE TRAINERS

### HOBART & FACILITIES

### YOUR CAMPUS

### SESSION LOCATIONS

### SANDY BAY COURSE TRAINERS

SANDY BAY & FACILITIES

YOUR CAMPUS

SESSION LOCATIONS