

FACULTY OF BUSINESS



NATIONAL CODE: BSB50820

## DIPLOMA OF PROJECT MANAGEMENT

Make things happen with a Diploma of Project Management. This course will teach students to apply project management skills and knowledge in a variety of contexts and industry sectors.

### CAMPUSES

BRISBANE

EIGHT MILE PLAINS

GOLD COAST

HOBART

SANDY BAY

### OVERVIEW



**INTAKES**  
Flexible



**DURATION**  
52 weeks



**INDUSTRY PLACEMENT**



**INTERNATIONAL STUDENTS**  
No



**CRICOS CODE:**

**16**

**CONTACT HOURS**  
0



Entirely Online (Self-study)

Want to get a start in  
business?  
You need training.

Watch the Video



THIS COURSE ARTICULATES OR PACKAGES WITH THE FOLLOWING UNIVERSITIES:



### NATHANIEL

Graduate Certificate In Leadership Diversity

From our trainer Rudy to the fantastic online resources, super engaging lectures and the outstanding guest speakers – plus the 24/7 student support – there's literally no better place to study. It's incredible.

## DIPLOMA OF PROJECT MANAGEMENT

### About this Course

This qualification reflects the role of individuals who apply project management skills and knowledge. They may manage projects in a variety of contexts, across a number of industry sectors. They have project leadership and management roles and are responsible for achieving project objectives. They possess a sound theoretical knowledge base and use a range of specialised, technical and managerial competencies to initiate, plan, execute and evaluate their own work and/or the work of others.

### What You'll Learn

- manage project scope, timelines, cost, risk, and human resources
- use specialised, technical, and managerial competencies to plan, complete, and review project work
- promoting the values of public service (Elective units)
- managing Information Technology needs of projects (Elective units)
- effectively managing competing priorities (Elective units)

### Career Outcomes

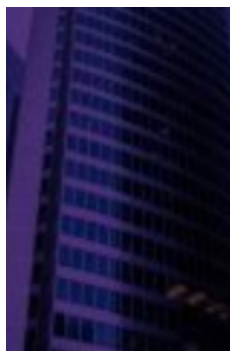


## Rhodes works with industry leaders



## Interested in Studying?

Here's what our students think.



Nathaniel

From our trainer Rudy to the fantastic online resources, super engaging lectures and the outstanding guest speakers – plus the 24/7 student support – there's literally no better place to study. It's incredible.

## INTAKE DATES

## TUITION FEES ()

Course Name	Course Duration		Campus Availability	Intakes
Diploma of Project Management	52 weeks	\$0	BNE EMP EMP HBA SBY	Flexible

## ENTRY REQUIREMENTS

AGE	GRADE	IELTS
17	11	5.0

### ■ AGE

Minimum age of 17 years

### ■ EDUCATION & EXPERIENCE REQUIREMENTS

Year 11 Australian Senior High School Certificate, or equivalent (e.g. completion of Year 12 or High School in the students home country) with full academic results.

### ■ ENGLISH LANGUAGE

Intermediate English (equivalent to 5.0 academic or general IELTS)

### ■ REQUIRED IDENTIFICATION

Photo ID and evidence of citizenship (international students must provide copy of passport)

### ■ COMPUTER SKILLS & EQUIPMENT

Students on this course require computer access for learning purposes and to complete course assessments. As such, learners must have beginner/intermediate computing skills including use of Microsoft Office programmes, in addition to hardware requirements of a desktop or portable computer with keyboard, pointing device, speaker, web camera and microphone, and a broadband internet connection.

### ■ FURTHER INFORMATION

Students who are unable to meet the academic or English language criteria may in some cases be eligible to undertake our Language, Literacy & Numeracy (LLN) test. Criteria may change at any time without notice. Additional English language requirements may apply to international applicants from non-English speaking backgrounds wishing to articulate on a visa package into a university programme.

## BRISBANE COURSE TRAINERS

## BRISBANE & FACILITIES

### YOUR CAMPUS

### SESSION LOCATIONS

## EIGHT MILE PLAINS COURSE TRAINERS

### EIGHT MILE PLAINS & FACILITIES

#### YOUR CAMPUS

#### SESSION LOCATIONS

## GOLD COAST COURSE TRAINERS

### GOLD COAST & FACILITIES

#### YOUR CAMPUS

#### SESSION LOCATIONS

## HOBART COURSE TRAINERS

### HOBART & FACILITIES

#### YOUR CAMPUS

#### SESSION LOCATIONS

## SANDY BAY COURSE TRAINERS

### SANDY BAY & FACILITIES

#### YOUR CAMPUS

## SESSION LOCATIONS