



FACULTY OF CIVIL CONSTRUCTION DESIGN



NATIONAL CODE: RII50520 + RII60520

PACKAGE: CIVIL CONSTRUCTION DESIGN

Our combined Diploma and Advanced Diploma of Civil Construction Design is designed to develop practical skills, industry experience, and professional knowledge through hands-on projects, self-reflection, and engagement with real-world civil construction practice.

OVERVIEW



INTAKES
Monthly



DURATION
104 weeks



INDUSTRY PLACEMENT



INTERNATIONAL STUDENTS
No



CRICOS CODE:



CONTACT HOURS

16

0

 Blended Learning

PACKAGE: CIVIL CONSTRUCTION DESIGN

[View Diploma Course](#)

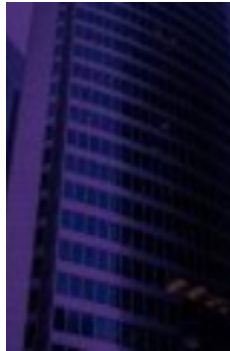
[View Advanced Diploma Course](#)

What You'll Learn

-

Career Outcomes





Nathaniel
From our trainer Rudy to the fantastic online resources, super engaging lectures and the outstanding guest speakers – plus the 24/7 student support – there's literally no better place to study. It's incredible.

INTAKE DATES

2026

MAY

Monday, 11th

JUNE

Monday, 01st

JULY

Monday, 13th

AUGUST

Monday, 03rd

SEPTEMBER

Monday, 07th

OCTOBER

Monday, 12th

NOVEMBER

Monday, 02nd

DECEMBER

Monday, 07th

2027

JANUARY

Monday, 04th

FEBRUARY

Monday, 01st

MARCH

Monday, 01st

APRIL

Monday, 12th

MAY

Monday, 10th

JUNE

Monday, 07th

JULY

Monday, 12th

AUGUST

Monday, 02nd

SEPTEMBER

Monday, 06th

OCTOBER

Monday, 11th

NOVEMBER

Monday, 01st

DECEMBER

Monday, 06th

TUITION FEES (DOMESTIC)

Course Name	Course Duration	Domestic	Campus Availability	Intakes
-------------	-----------------	----------	---------------------	---------

PACKAGE: CIVIL CONSTRUCTION DESIGN

104 weeks

\$0

Monthly

ENTRY REQUIREMENTS

AGE

18

GRADE

Australian Year 12 or equivalent

IELTS

- **AGE**
Minimum age of 18 years or turning 18 years old prior to commencement of the course
- **EDUCATION & EXPERIENCE REQUIREMENTS**
- **ENGLISH LANGUAGE**
- **REQUIRED IDENTIFICATION**
Photo ID
- **COMPUTER SKILLS & EQUIPMENT**